



Dell™ Compellent™ Enterprise Manager

Unmatched storage control and simplicity

- Complete storage resource management for Dell Compellent enterprise storage environments
- Drastically cuts day-to-day management time, resources and technology training
- View your system from the standpoint of capacity, performance and path utilization, all from a granular point in time



Complex management limits the benefits of virtualization

Managing complex storage tasks like replication and capacity planning for multi-terabyte SANs at multiple locations can be daunting, particularly if you require more than one interface. Operational costs and management complexity can grow exponentially with your enterprise, making administration even more difficult. Companies require a better and easier way to monitor and manage their storage area networks.

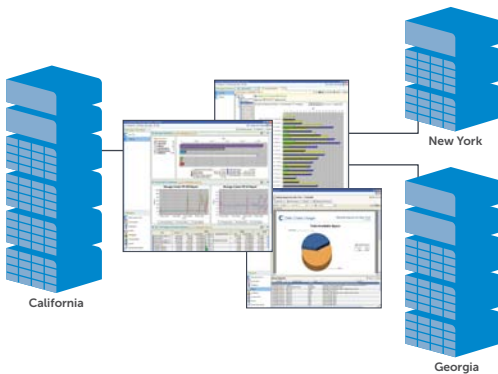
Comprehensive SAN management

Dell Compellent Enterprise Manager simplifies administration of Dell Compellent environments by providing comprehensive monitoring and management of all local and remote Storage Center SANs. You can drastically cut day-to-day SAN management time with a single interface that provides a complete view of your storage environment, streamlining administration and reducing operational costs.

With Enterprise Manager, you can reduce costs by maximizing utilization and purchase storage more efficiently using accurate capacity and performance data. Streamline disaster recovery by reducing replication planning and configuration time with a point-and-click interface that helps you set up remote replication in as few as six clicks.

Key benefits

- Cuts administration time with a single interface and a complete view of storage resources
- Simplifies disaster recovery process with reduced configuration time and easy online replication verification
- Reduces disk costs with reports that allow you to accurately assess storage resources and plan for future capacity needs
- Speeds event resolution with centralized alert notification and event log management
- Optimizes performance by allowing you to identify and manage trends
- Showcases the cost and power savings of Dell Compellent storage



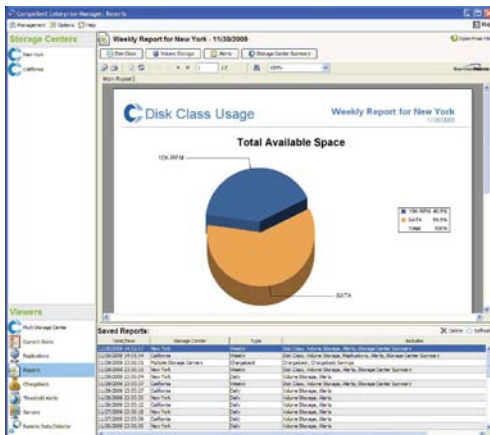
Monitor, manage and measure from a single centralized console.

Multiple systems, single interface

With Enterprise Manager, all local and remote Storage Center systems are discovered using a single console. This centralized interface provides a complete view of all aspects of your Dell Compellent storage environment, significantly reducing storage administration time. You can choose from a variety of comparative views across all Storage Center systems, including total space available, used space, free space, number of volumes, number of Replays, number of replications, and savings vs. RAID 10.

Easy-to-use reporting for informed decisions

Enterprise Manager's extensive system monitoring provides immediate insight into your storage environment, while easy-to-use reports summarize capacity utilization, replications and events. Make informed decisions and showcase your success as you decrease storage expenditures, simplify management, streamline disaster recovery and increase data center efficiency. Enterprise Manager lets you automatically e-mail reports daily, weekly or monthly, determine storage costs associated with the different tiers of capacity in your environment, translate storage technologies into actual dollar savings with boardroom-ready "hero reports," and provide a powerful foundation for a green IT strategy by automatically calculating energy costs and CO₂ emissions.

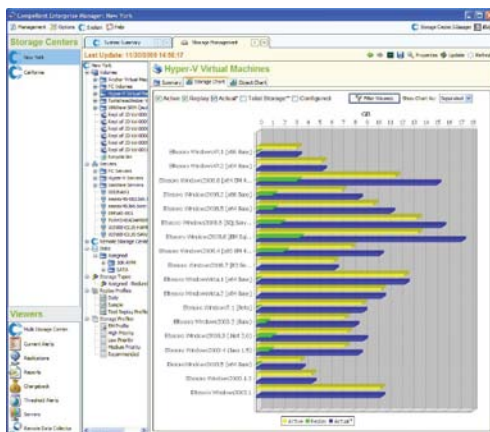


Sophisticated reporting enables informed storage decisions.

Reduce spending and optimize performance

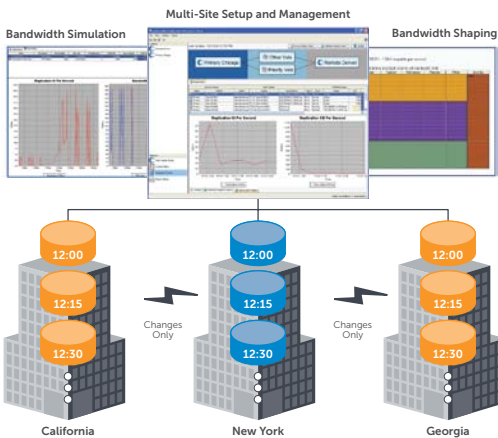
The ability to accurately assess storage resources and plan for future capacity and performance needs reduces overall disk spending. Enterprise Manager simplifies capacity planning, increasing your storage purchase efficiency. You can view storage capacity utilization on all of your Storage Center systems over a period of time, including summaries from last week, last month, or last year, as well as important I/O details to help optimize performance.

Easily view current and historical consumption for specific storage volumes over time to balance server loads and increase server purchase efficiency. Storage consumption reports include total space available, allocated space, used space and configured space for all disks and total space and used space for any RAID selection with any disk tier.



Detailed information helps you purchase storage more efficiently.

You can gain valuable insight into current writable and historical and optimize capacity and performance planning with threshold alerts for storage and I/O usage and CPU and memory utilization information.



Quickly implement replication configurations that were previously too complex or time-consuming.

Simplify replication management

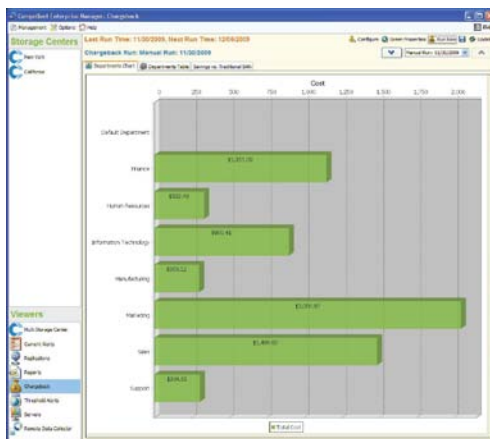
Enterprise Manager simplifies disaster recovery with remote replication setup in just a few clicks. This streamlined replication management also allows online replication verification and rapid recovery with a single-click disaster declaration.

Using Enterprise Manager, you can easily and accurately estimate bandwidth requirements upfront based on actual data. Advanced bandwidth-shaping algorithms allow you to utilize the lowest bandwidth required while maintaining optimal performance. And you can monitor replication and bandwidth utilization over time to understand requirements and optimize transfer rates on an hourly basis throughout the day.

Certified VMWare® vCenter™ Site Recovery Manager (SRM) integration helps you enhance disaster recovery protection for your VMware virtualized environment.

Chargeback calculates true costs of storage

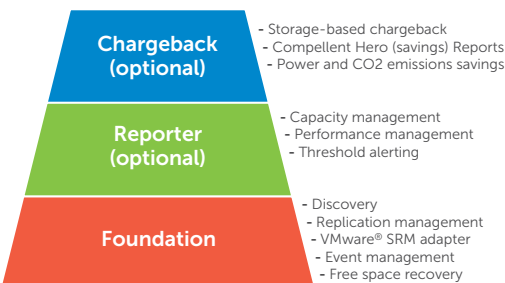
Enterprise Manager's storage-based chargeback feature automatically calculates storage costs based on the actual space consumed by applications. Administrators can assign different costs to each volume based on disk class or storage tier. Enterprise Manager monitors storage utilization and generates reports that identify the cost of storage consumption based on department name or account number. Chargeback reports can be scheduled for automatic email delivery to business units daily, weekly, monthly or quarterly.



Manage the actual cost of storage usage per department.

Powerful SRM with unmatched simplicity

Enterprise Manager delivers powerful storage resource management software for Dell Compellent Storage Center SANs paired with unmatched control and simplicity. The complete Enterprise Manager suite features the following licensed software components: Enterprise Manager Foundation, Discovery, Replication Management, VMWare® SRM Adapter, Event Management, Free Space Recovery, Enterprise Manager Reporter, Performance Management, Capacity Management, Threshold Alerting, Enterprise Manager Chargeback, Storage-Based Chargeback, Hero Reports, Power Savings.



Enterprise Manager suite components

About Dell™ Compellent™

Part of the Fluid Data architecture, Dell Compellent provides storage solutions that optimize efficiency, agility and resiliency for enterprises and the cloud. With built-in intelligence and automation, Dell Compellent helps organizations cut overall storage costs, secure data against downtime and disaster, and scale on a single platform in line with business needs. For more information, visit www.compellent.com.

Enterprise Manager specifications

Server environment	
Data Collection Service OS Support	Microsoft Windows Server 2003, 2008, 2008 R2
Client OS Support	Microsoft Windows XP, Vista, 7, Microsoft Windows Server 2003, 2008, 2008 R2
Optional Agent OS Support	Microsoft Windows Server 2003, 2008, 2008 R2
Database Support	Microsoft SQL 2000, 2005, 2005 Express Edition, 2008, MySQL 5.0 and 5.1, Flat file
Architecture	
Resource Usage Identification	Systems, Disks, Volumes and Servers
Performance I/O Utilization	Systems, Disks, Ports, Volume and Servers
Automated E-mail Report Notification	Yes, Daily, Weekly, Monthly, On Demand
Storage-based Chargeback	Yes
Storage Center Connectivity	TCP/IP
Threshold Alerting	Yes
Remote Replication	
Wizard-based Replication Creation	Yes
Replication Progress Reporting	Yes
Bandwidth Utilization Reporting	Yes
Data Validation and Recovery	Yes
Disaster Site Recovery Activation	Yes
VMWare® SRM Adapter	Yes
Management	
User-configurable Properties and Security Profiles	Yes
Phonehome	Optional
Configuration Import and Export	Yes
System Log Forwarding	Yes

Dell Compellent

7625 Smetana Lane
Eden Prairie, MN 55344
877-715-3300 tel
952-294-3333 fax
www.compellent.com

Manage data differently at Compellent.com

© 2012 Dell Inc. All Rights Reserved. Dell, the Dell logo and Compellent are trademarks of Dell Inc. DSEM_011012

